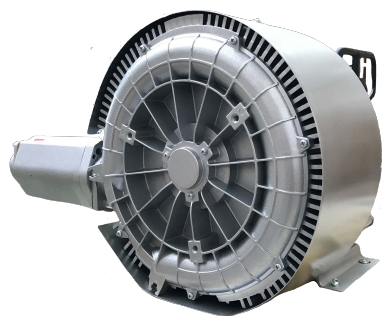


# COMPRESSORI-ASPIRATORI A CANALE LATERALE

# SIDE CHANNEL COMPRESSORS AND VACUUM PUMPS

SC902SF

## SC902SF5.5T-IE2 / 7.5T-IE2 / 11T-IE2 / 15T-IE2



Costruiti secondo il principio dei canali laterali, funzionano sia in aspirazione sia in compressione e sono progettati per lavorare a servizio continuo. Realizzato in alluminio pressofuso garantisce la massima robustezza e maneggevolezza. Non occorre lubrificazione in quanto non c'è contatto tra le parti statiche e rotanti. Particolari silenziatori contribuiscono ad ottenere un elevato livello di silenziosità.

Construction of the ring blowers fans is based on the lateral ducts principle. The blowers can operate as either exhaust or compression fans and are designed for continuous service. The device is assembled directly on the motor shaft; all the rotating parts are dynamically balanced to ensure absolute absence of vibration. Full die-cast aluminium construction for maximum sturdiness and ease of handling.



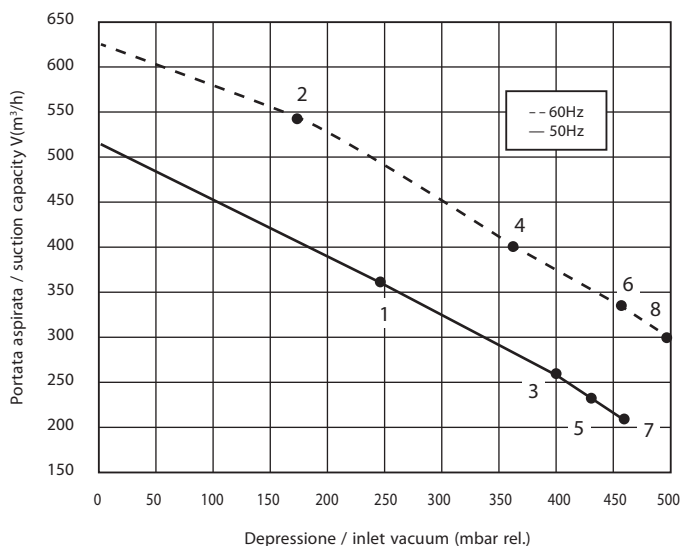
Curve Curva n.	Model Modello n.	Frequency Frequenza (Hz)	Output power Potenza (kW)	Voltage Vtaggio (V)	Rated current Assorbimento (A)	Noise Rumorosità dB (A)	Weight Peso (Kg)
1	SC902SF5.5T-IE2	50	5,5	400/690	10.9Δ/6.3Y	74	83
2	SC902SF5.5T-IE2	60	6,3	460/720	10.2Δ/5.8Y	78	83
3	SC902SF7.5T-IE2	50	7,5	400/690	14.5Δ/8.4Y	74	86
4	SC902SF7.5T-IE2	60	8,6	460/720	13.6Δ/7.8Y	78	86
5	SC902SF11T-IE2	50	11,0	400/690	23.9Δ/13.7Y	74	104
6	SC902SF11T-IE2	60	12,6	460/720	22.7Δ/13.0Y	78	104
7	SC902SF15T-IE2	50	15,0	400/690	31.2Δ/18Y	74	120
8	SC902SF15T-IE2	60	17,3	460/720	29.4Δ/16.9Y	78	120



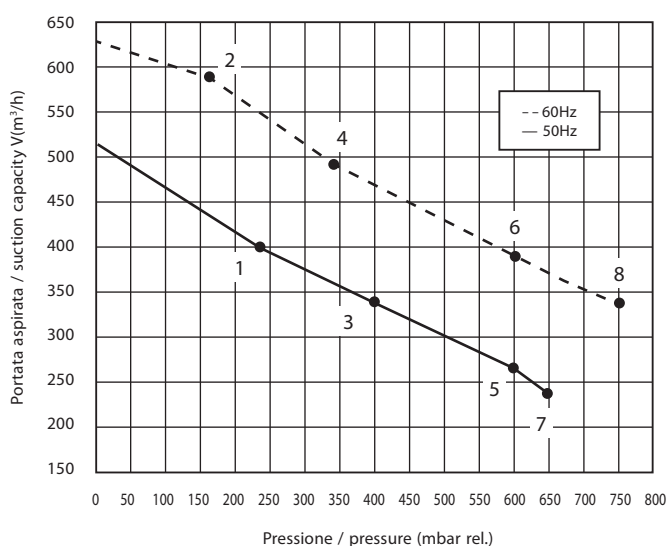
**I.VA.CO. s.r.l.**  
Via delle Brigole, 33  
23877 Paderno D'Adda (LC)  
Tel. +39 039 9281084  
[www.ivaco.it](http://www.ivaco.it)  
[sales@ivaco.it](mailto:sales@ivaco.it)



ASPIRAZIONE / EXHAUST



COMPRESSIONE / COMPRESSION



I valori di portata e pressione si intendono per il convogliamento dell'aria avente in aspirazione temperature di 15°, densità di 1,23 kg/m³ e pressione a 1.013 mbar. La tolleranza di queste curve si intende del ±10%. I dati sopraindicati possono essere variati senza preavviso.

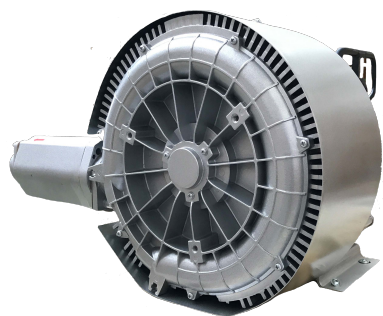
The characteristic data given here refer to the handling of gas with inlet temperature of 15° C, normal density of 1,23 kg/m³ and absolute pressure of 1.013 mbar. Tolerance of ±10%. The data may change without any notification.

a i r m o v i n g

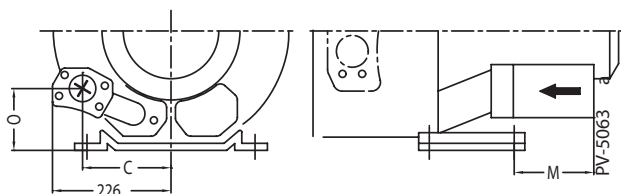
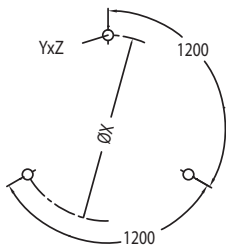
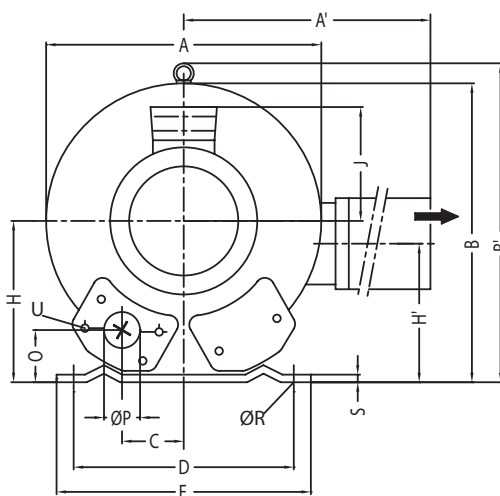
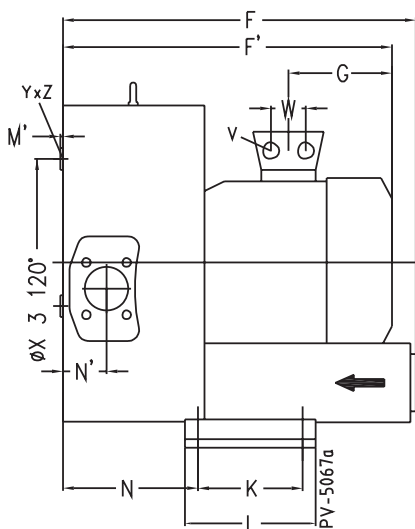
# COMPRESSORI-ASPIRATORI A CANALE LATERALE

SIDE CHANNEL  
COMPRESSORS AND  
VACUUM PUMPS

SC902SF5.5T-IE2 / 7.5T-IE2 / 11T-IE2 / 15T-IE2



Dimensioni / Dimensions = mm



**I.VA.CO. s.r.l.**  
Via delle Brigole, 33  
23877 Paderno D'Adda (LC)  
Tel. +39 039 9281084  
[www.ivaco.it](http://www.ivaco.it)  
[sales@ivaco.it](mailto:sales@ivaco.it)

Phase Fase	A	A'	B	B'	C	D	E	F	F'	G	H	H'	J	K	L	M	N	N'	O	ØP	ØR	S	V	W	ØX	YxZ	X-holes X-fori	
SC902SF5.5T-IE2	3~	500	549	490	509	76	356	394	545	589	226	240	199	167	170	217	-	236	84	65	G2 <sup>1/2</sup>	15	6	4xM32x1.5	42	286	M12x20	51.4°/120°/240°
SC902SF7.5T-IE2	3~	500	549	490	509	76	356	394	545	589	226	240	199	167	170	217	-	236	84	65	G2 <sup>1/2</sup>	15	6	4xM32x1.5	42	286	M12x20	51.4°/120°/240°
SC902SF11T-IE2	3~	500	549	490	509	76	356	394	545	694	318	240	199	197	170	217	-	212	84	105	G2 <sup>1/2</sup>	15	6	4xM40x1.5	54	286	M12x20	51.4°/120°/240°
SC902SF15T-IE2	3~	500	549	490	509	76	356	394	545	694	318	240	199	197	170	217	-	212	84	105	G2 <sup>1/2</sup>	15	6	4xM40x1.5	54	286	M12x20	51.4°/120°/240°

a i r m o v i n g